



SKYDIVING

DROPZONE INFORMATION

1 GENERAL INFORMATION & FACILITIES

2 LOCATION & CAR PARKING

3 PUBLIC TRANSPORT

4 The Prop Bar and CAFE

5 PUBLIC TOILETS

6 TANDEM JUMPER INFORMATION

7 CONTACT & FEEDBACK



SKYDIVE HIBALDSTOW

Hibaldstow Airfield,
Redbourne Road,
Hibaldstow,
North East Lincolnshire,

DN20 9NN

www.skydiving.co.uk

Airfield Reception :
01652 648837

2 LOCATION & CAR PARKING

Skydive Hibaldstow is located in the small rural village of Hibaldstow in Lincolnshire – by their nature parachute centres are away from built up areas. This does mean that the village is not well serviced by public transport.



How to reach us

By Car – via the M62 / M18 / M180 / A15

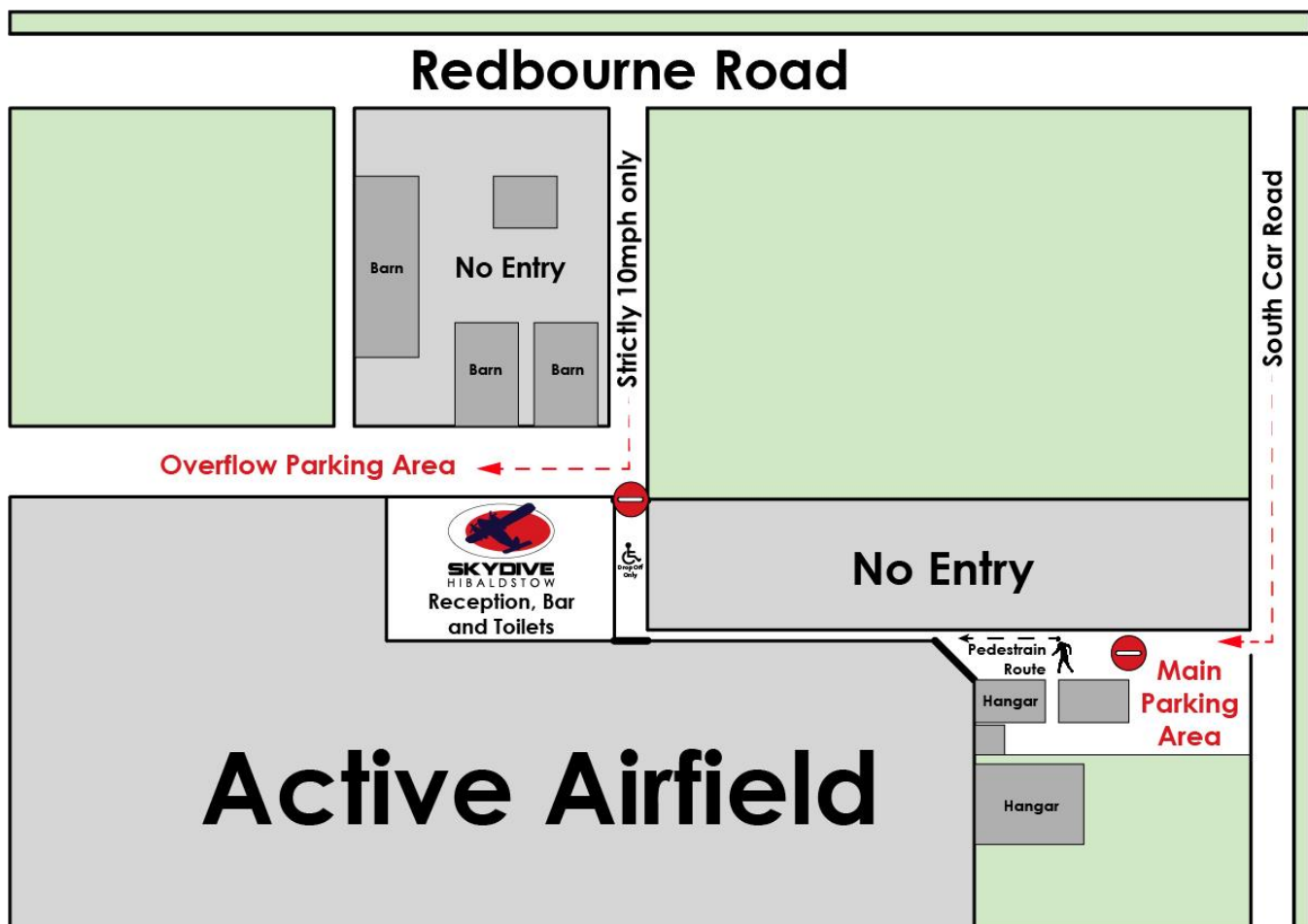
For full details and map please see the [Contact Directions](#) page on our website.

The dropzone postcode is DN20 9NN – once you reach Redbourne Road please then follow the signposts to our car park. Parking map boards are located onsite.

There is a 5 minute walk from the main carpark to our reception,

An accessible drop-off point/parking bay near the main reception and a closer alternative car park (marked overflow on the map below) is available. We would recommend using the drop-off point for those with wheelchairs or with limited mobility.

Please note South Carr Road is a tarmac road, however the track past the farm barns is an unsealed road.



TRAIN

The closest train station is SCUNTHORPE (SCU)
Station Road, Scunthorpe DN15 6PY

Click here for station information
<https://www.nationalrail.co.uk/stations/SCU/details.html>

You may also notice a train station in Brigg, however services to this station run infrequently and only on Saturdays.



TAXIS

There is a taxi rank outside Scunthorpe station.
The journey will take about 15 minutes and should cost no more than £20.

Other local taxi companies

Brigg private hire taxis Ltd :01652 657575

Cary Lane Taxis 01652 656206

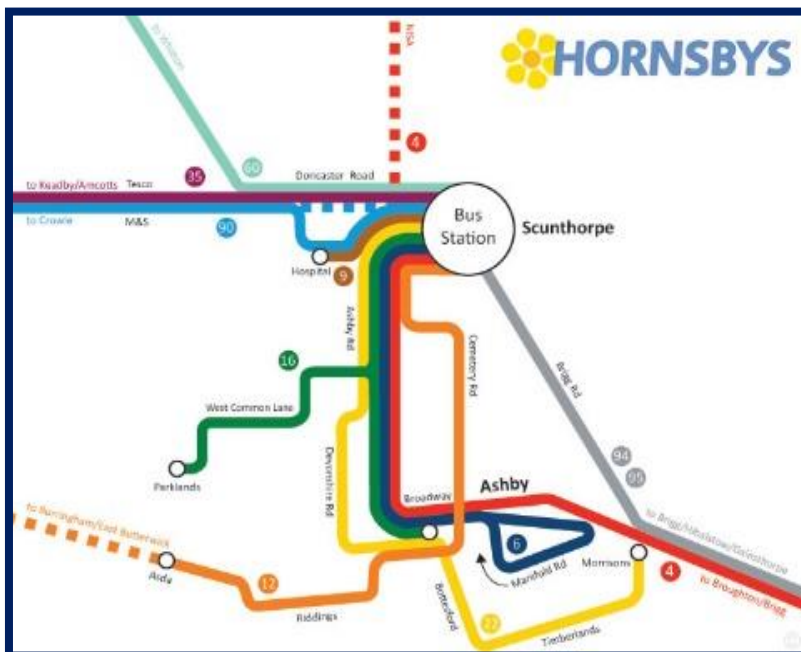
AD Taxi 01652 640922 www.adtaxiskirtonlindsey.co.uk

www.jujtaxis.co.uk offer wheelchair accessible taxis from Scunthorpe

BUS

The closest main bus station is Scunthorpe. There are limited bus services to Hibaldstow. It may be possible to travel to Brigg and then catch a taxi from there.

Call Traveline on 0871 200 22 33 for more information on local bus transport.



Local bus services :

#4

Route : Normanby Enterprise Park -
Scunthorpe - Broughton - Brigg
Monday to Saturday = Hornsby
Coaches
Sunday and Bank Holidays =
Stagecoach in Lincolnshire

#94

Route : Gainsthorpe - Redbourne -
Hibaldstow - Sturton - Scawby -Brigg
Monday to Saturday = Hornsby
Coaches

4 The Prop Bar and CAFÉ

In 2014 we opened a brand new clubhouse including full café facilities

The main area measures approx. 210 square metres. The flooring is even and covered with industrial carpet tiles. Seating is in individual padded chairs and tables for four. In addition there are a several higher round tables with stools and booth style seating

There is a lowered height counter at the end of the café serving counter. A limited number of high chairs are available.

Opening Times

Low Season

- Weds - Sun 8am – 3pm*
- may open later on weekends

High Season

- Mon - Fri 8am – 5pm*
- Sat & Sun - open later on weekends

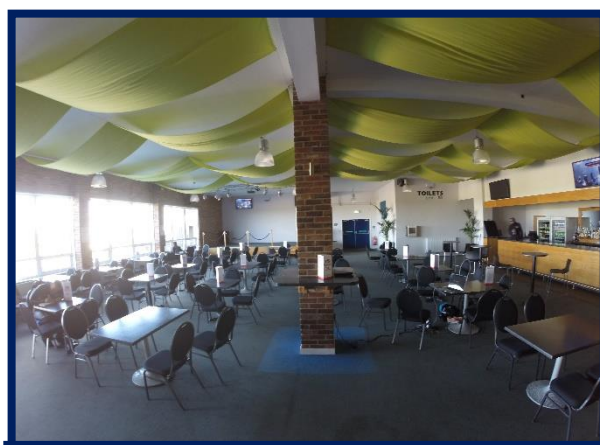
Menu Start Times

Breakfast from opening daily
Lunch menu from 12 noon.

Menu

We offer freshly cooked food at reasonable prices.

The main menu is written on printed menus, with daily special added.
Vegetarian options available.



Private Hire is available for birthday parties, Christmas dinners, corporate events and wedding receptions.

For events, venue hire and specific enquiries please call Hibaldstow Airfield Manager Ash Kemp on 01652 648837.

5 PUBLIC TOILETS

Inside the main clubhouse are spacious male and female toilets with cubicles. All facilities are well lit with even linoleum flooring.



An accessible ramp is available into the main clubhouse via 1.95m wide doors.

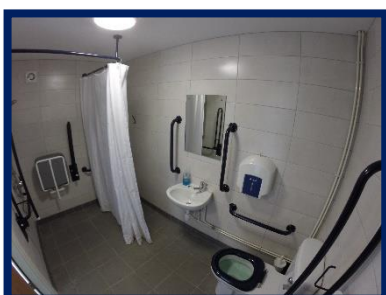
There is a large custom built accessible toilet

- Wide door 1m10cm
- Space inside for full wheelchair access & turning – room measures 2.2m in length x 1.5m wide
- Lowered sink
- Handrails
- Toilet backrest
- Emergency cord

These toilet facilities are available whenever the airfield is open. Please see Section 1.

One additional accessible toilet is situated in the ladies toilets in the onsite bunkhouse.

The private en-suite bedroom also has an accessible wet-room shower with lowered showerhead, folding seat and multiple handrails.



6 TANDEM JUMPER SPECIFIC INFORMATION

If you are taking part in a tandem skydive with us then please note the following information :

- Check in takes place in our front reception area. Access to the main reception is via two wide steps and two sets of double doors (1.8m wide). An accessible ramp is available to the side of the clubhouse.
- Large print paperwork is available on request.
- You will then be asked to wait in the café area inside the clubhouse.
- Our tandem briefings take place in an accessible room with a wide ramp for wheelchair access and handrail
- Access to the main building is outside via double doors (1.95m wide) out of the clubhouse where there is a small step. Alternative access is available via the side doors and down the accessible ramp.
- The briefing room has lecture style seating and clipboards for completing the briefing check-sheet. Large print is available on request.
- For further information regards skydiving with limited mobility please contact our Office on 01652 648837 or email info@skydiving.co.uk
- When it is your turn to jump you will go to an outside area to change into your skydiving jumpsuit and collect your goggles and headgear.
- Small lockers are available to store any valuables for those attending on their own.

ADDITIONAL INFORMATION FOR TANDEM SPECTATORS

- Spectators are always welcome however please be aware that if you are attending with a tandem customer then the expected experience time midweek is 2-4 hours, and on weekends 3-5 hours. Waiting times could be longer on busy days or when weather causes delays, so please consider this for elderly or young people.
- Exterior seating is in the form of wooden bench seating and picnic tables.

7 CONTACT & FEEDBACK

HIBALDSTOW AIRFIELD RECEPTION : 01652 648837
AIRFIELD DIRECT EMAIL : INFO@SKYDIVING.CO.UK



Reservations and further enquires

Reservations Office : 01652 648837

Email: info@skydiving.co.uk

Open Monday – Sunday 9am – 5pm.

Please note during busy times, especially weekends when we may be focusing on jumping. Emails may not be answered straight away, please ring the office if your enquiry is urgent

Feedback

- We appreciate and welcome any comments relating to your visit to Skydive Hibaldstow.
- We are always interested in ways to improve our visitor experiences.
- Please email your enquiry or comment to info@skydiving.co.uk telephone +44 (0) 1652 648837 or contact a member of staff when you visit us.

Company Details

Sidetarget Ltd Trading as Target Skysports & Skydive Hibaldstow

Company Reg No. 2236528

Registered Office : Woodleigh Hall Farm, Woodlands Drive, Rawdon, Leeds.LS19 6JT

FURTHER INFORMATION

Document produced May 2021 and under review for 2022